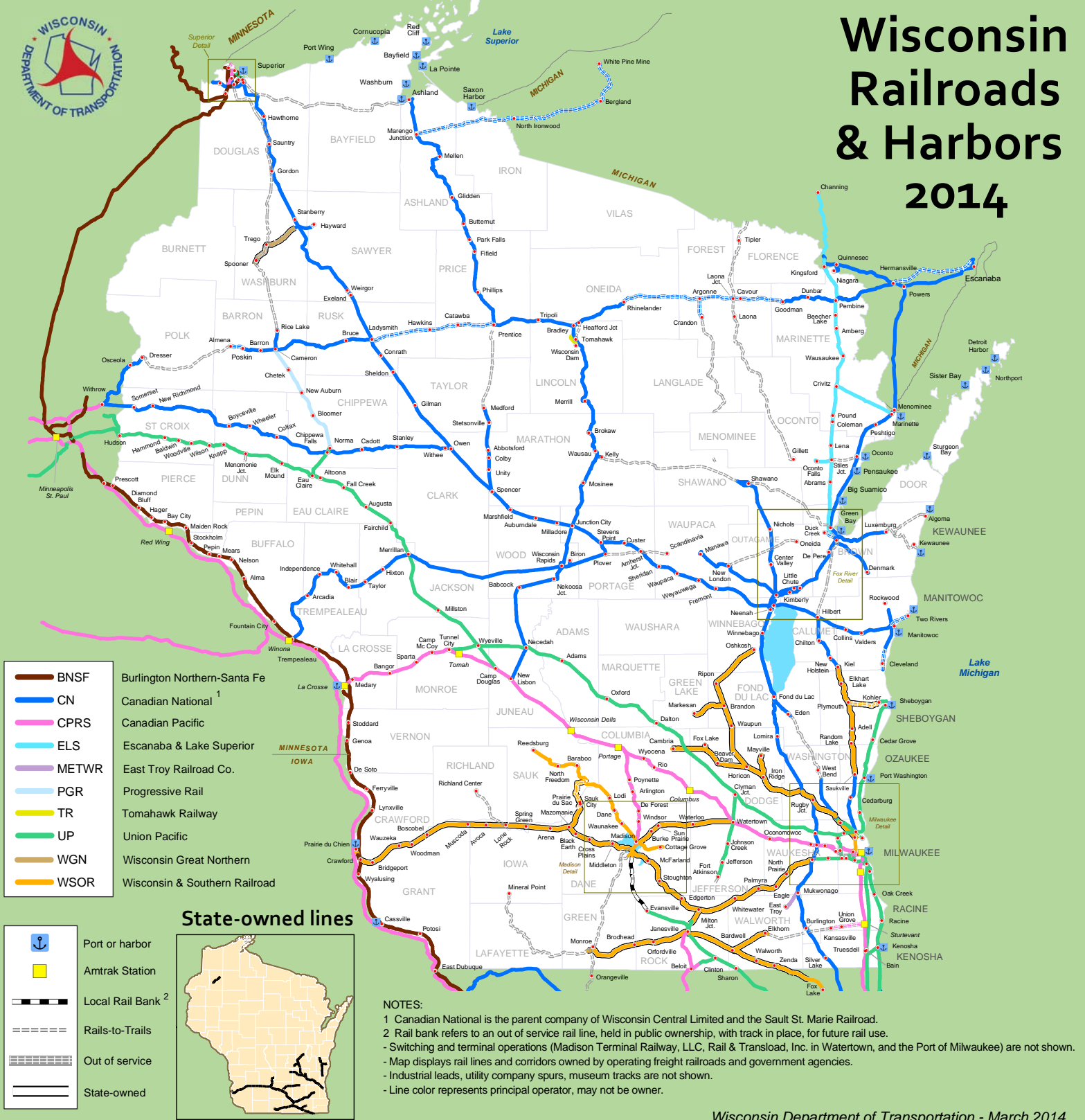




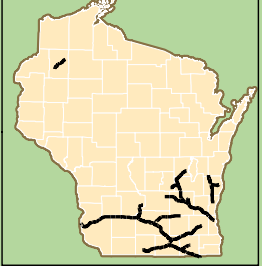
Wisconsin Railroads & Harbors 2014



- BNSF Burlington Northern-Santa Fe
- CN Canadian National ¹
- CPRS Canadian Pacific
- ELS Escanaba & Lake Superior
- METWR East Troy Railroad Co.
- PGR Progressive Rail
- TR Tomahawk Railway
- UP Union Pacific
- WGN Wisconsin Great Northern
- WSOR Wisconsin & Southern Railroad

- Port or harbor
- Amtrak Station
- Local Rail Bank ²
- Rails-to-Trails
- Out of service
- State-owned

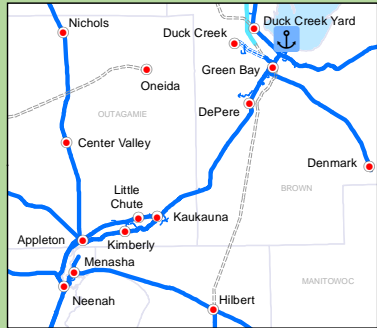
State-owned lines



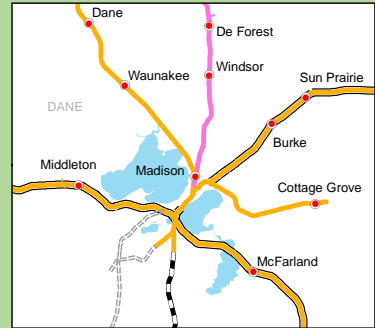
NOTES:
 1 Canadian National is the parent company of Wisconsin Central Limited and the Sault St. Marie Railroad.
 2 Rail bank refers to an out of service rail line, held in public ownership, with track in place, for future rail use.
 - Switching and terminal operations (Madison Terminal Railway, LLC, Rail & Transload, Inc. in Watertown, and the Port of Milwaukee) are not shown.
 - Map displays rail lines and corridors owned by operating freight railroads and government agencies.
 - Industrial leads, utility company spurs, museum tracks are not shown.
 - Line color represents principal operator, may not be owner.

Wisconsin Department of Transportation - March 2014

Fox River Valley



Madison



Milwaukee



Superior

